

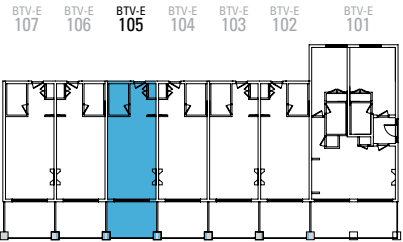
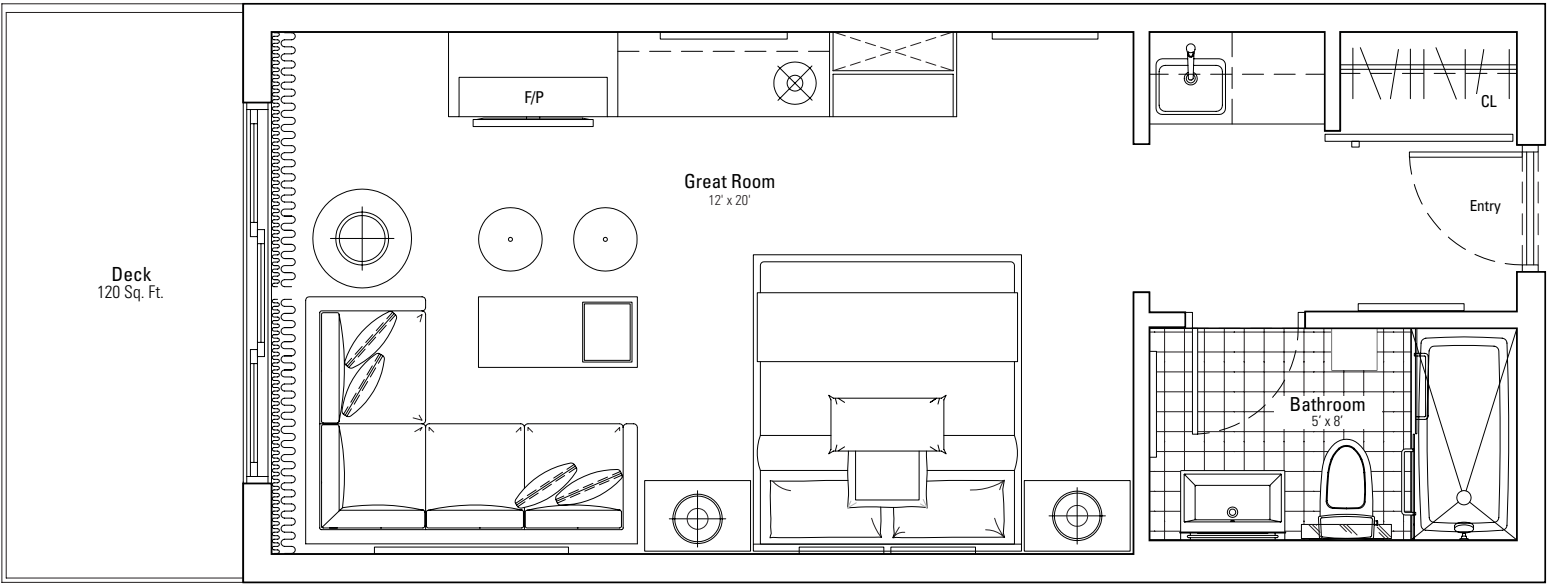
BOATHOUSE

Perched on the water's edge, Touchstone Resort's fully furnished boathouses give your family the best of cottage country living. Magnificent views of the endless water open your eyes and heart to the exceptional opportunities Muskoka has to offer.



BOATHOUSE

STUDIO SUITE
408 SQ FT

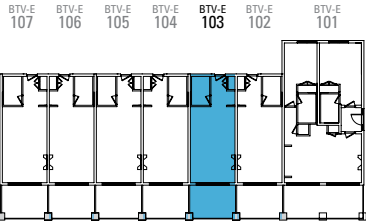
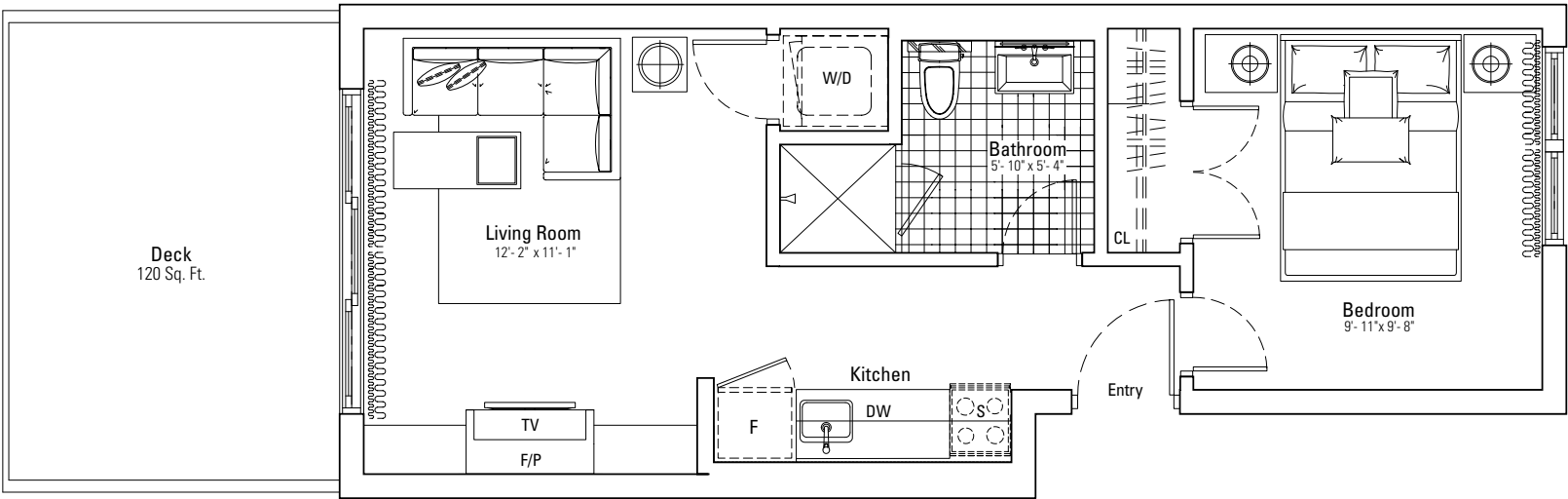


East Wing / Ground floor

The vendor reserves the right to make changes and modifications to maintain the high standards of these condos. Renderings are artist's concept. E.&O.C.

BOATHOUSE

1 BEDROOM
413 SQ FT

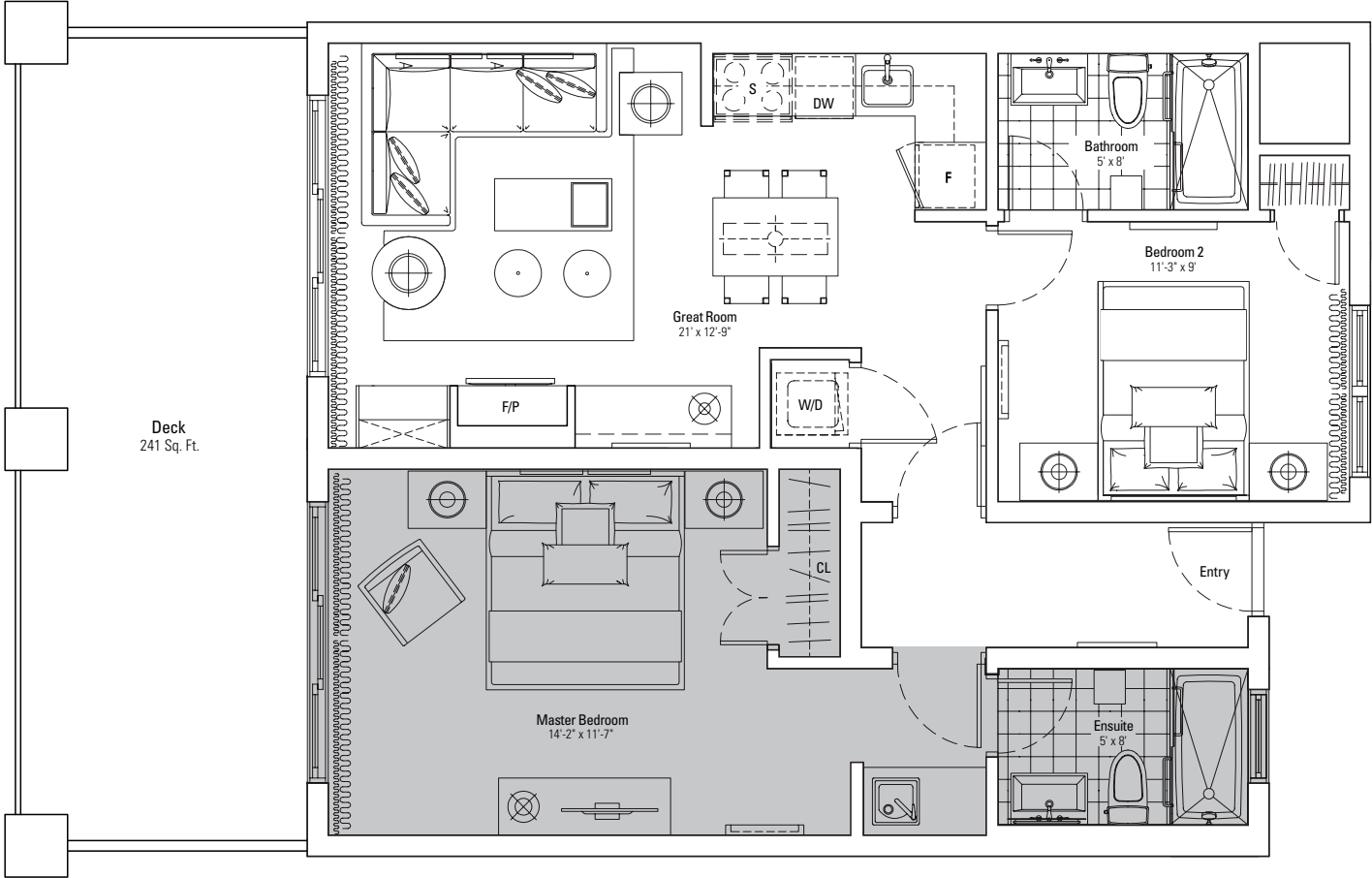


East Wing / Ground floor

The vendor reserves the right to make changes and modifications to maintain the high standards of these condos. Renderings are artist's concept. E.&O.C.

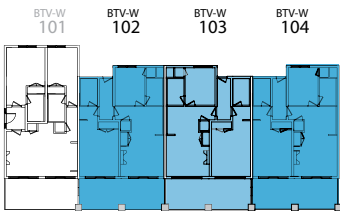
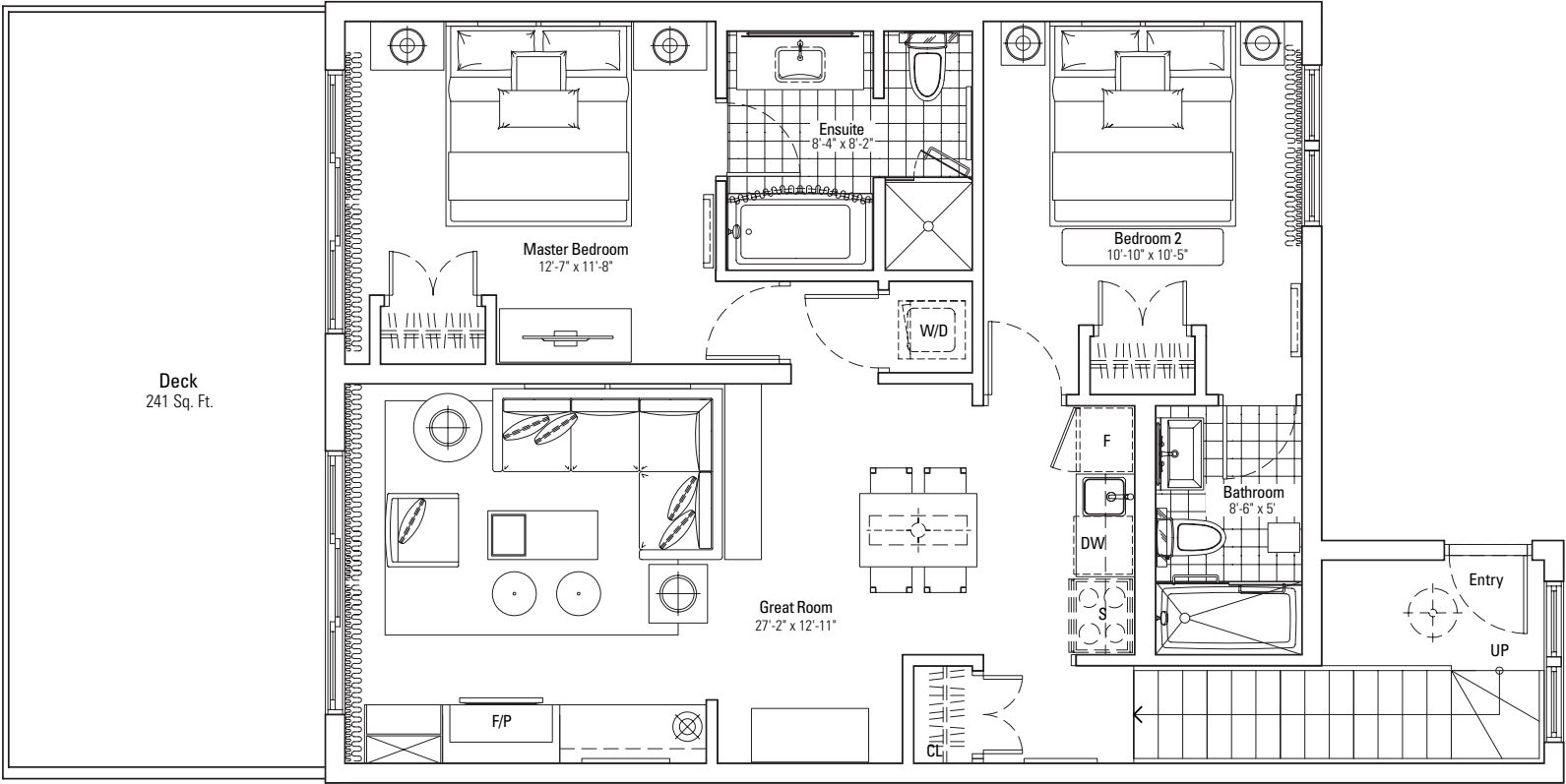
BOATHOUSE

2 BEDROOM
LOCK OFF* 850 SQ FT

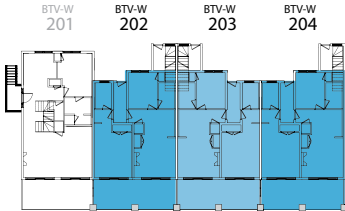


BOATHOUSE

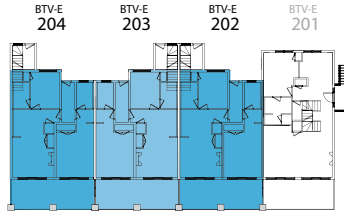
2 BEDROOM
969 SQ FT



West Wing / Ground floor



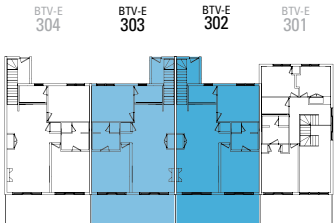
West Wing / Second floor



East Wing / Second floor

*Lock off units can be occupied by owner or put on rental program (with separate entrance).

The vendor reserves the right to make changes and modifications to maintain the high standards of these condos. Renderings are artist's concept. E.&O.C.

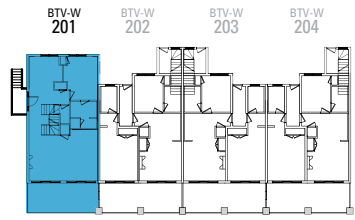
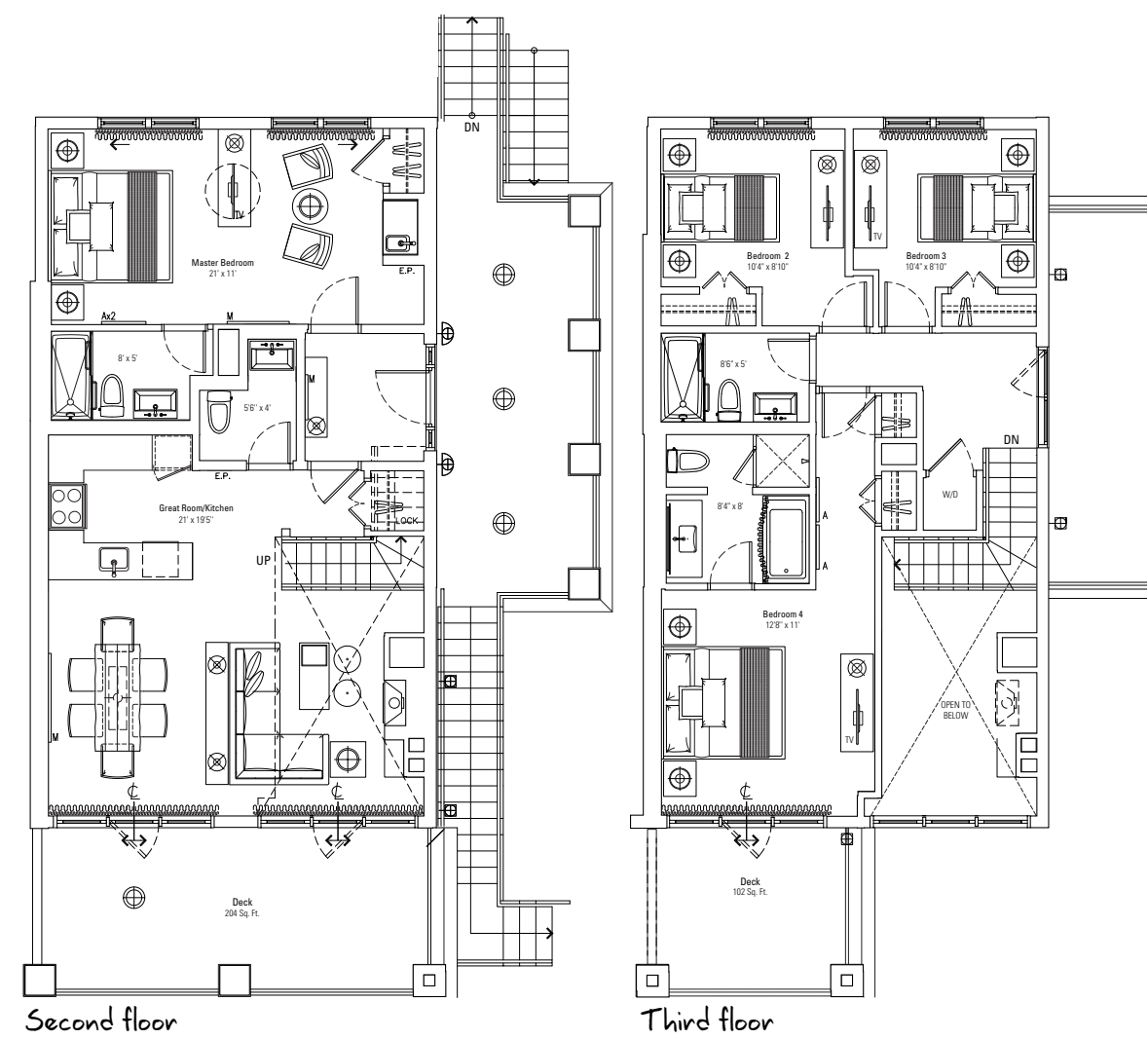


East Wing / Third floor

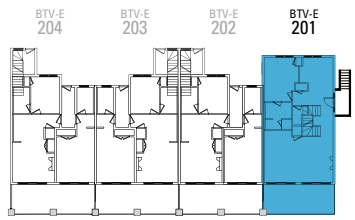
The vendor reserves the right to make changes and modifications to maintain the high standards of these condos. Renderings are artist's concept. E.&O.C.

BOATHOUSE

4 BEDROOM
LOCK OFF* 1,644 SQ FT



West Wing / Second floor
and Third floor



East Wing / Second floor
and Third floor

The vendor reserves the right to make changes and modifications to maintain the high standards of these condos. Renderings are artist's concept. E.&O.C.

